



complete furniture components

NOUVEAU NOIR.

Lighting Collection.



complete furniture components



NOUVEAU NOIR RANGE

We have introduced an on-trend collection of light fittings and accessories in a stylish matt black finish. This selection of stunning fittings would work well within a contemporary setting along side stylish dark coloured units and worktops for a sophisticated scheme.



Tel: 0113 2713200

Email: sales@splcomponentsltd.co.uk

www.splcomponentsltd.co.uk

CABINET LIGHTING

SOLARIS DIFFUSED RECTI LIGHT



PART CODE & DESCRIPTION

Solaris Diffused Recti Light Matt Black

SY8951BL

COMPATIBLE POWER CONVERTERS

8W 12Vdc LED Power Converter (1-2 lights)	SY9980B
15W 12Vdc LED Power Converter (1-4 lights)	SY9739B
20W 12Vdc LED Power Converter (1-5 lights)	SY7350C
30W 12Vdc LED Power Converter (1-6 lights)	SY7715A



SOLARIS MULTI POINT RECTI LIGHT



PART CODE & DESCRIPTION

Solaris Multi Point Recti Light Matt Black

SY7923BL

COMPATIBLE POWER CONVERTERS

15W 12Vdc LED Power Converter (1-3 lights)	SY9739B
20W 12Vdc LED Power Converter (1-4 lights)	SY7350C
30W 12Vdc LED Power Converter (1-6 lights)	SY7715A



The diffused rectangular version of the Solaris surface mounted designer fitting has a super slim profile, in a stylish matt black finish. The Solaris also has a 120 degree beam angle, which fills cabinets or work surfaces and eliminates dark spots.

TECHNICAL INFO

Finish	Matt Black
Power Supply	12Vdc
Cable Length	1.5m
Colour Temperature	Natural White (4000K - 4500K)
Wattage	3.5W
IP Rating	IP20
Colour Rendering Index	Ra 85
Total Lumens	156lm
Beam Angle	120°
Dimensions (mm)	190 (w) x 76 (d) x 6 (h)

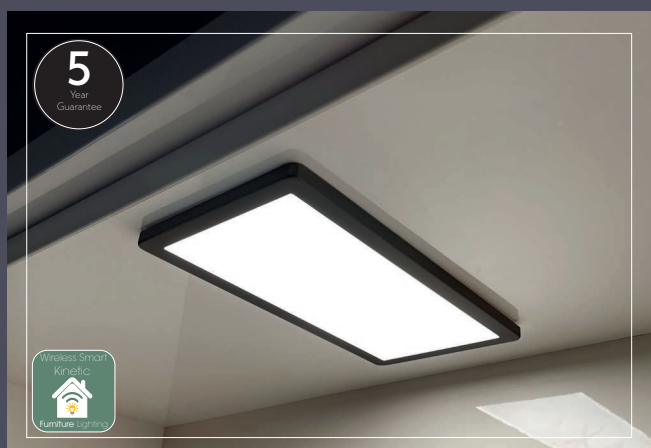
The multi point rectangular version of the Solaris surface mounted designer fitting has a super slim profile, in a stylish matt black finish. The Solaris also has a 120 degree beam angle, which fills cabinets or work surfaces and eliminates dark spots.

TECHNICAL INFO

Finish	Matt Black
Power Supply	12Vdc
Cable Length	1.5m
Colour Temperature	Natural White (4000K - 4500K)
Wattage	5W
IP Rating	IP20
Colour Rendering Index	Ra 84
Total Lumens	440lm
Beam Angle	120°
Dimensions (mm)	190 (w) x 70 (d) x 4 (h)

CABINET LIGHTING

VEGA MAX



PART CODE & DESCRIPTION

Vega Max Matt Black
Warm White or Natural White SY8887BL/WW or NW

COMPATIBLE POWER CONVERTERS

15W 12Vdc LED Power Converter (1-3 lights)	SY9739B
20W 12Vdc LED Power Converter (1-4 lights)	SY7350C
30W 12Vdc LED Power Converter (1-6 lights)	SY7715A



VEGA LED FLAT PANEL



PART CODE & DESCRIPTION

Vega Flat Panel Matt Black/Warm White SY8949BL/WW
Vega Flat Panel Matt Black/Natural White SY8949BL/NW

COMPATIBLE POWER CONVERTERS

8W 12Vdc LED Power Converter (1-2 lights)	SY9980B
15W 12Vdc LED Power Converter (1-4 lights)	SY9739B
20W 12Vdc LED Power Converter (1-5 lights)	SY7350C
30W 12Vdc LED Power Converter (1-6 lights)	SY7715A



The Vega Max is a super slim diffused cabinet light with a magnetic bezel for ease of fitting. It has been designed to offer a superior light output and has a diffused cover with no visible LED points. The fitting also has enhanced curved edges in a stylish matt black finish.

TECHNICAL INFO

Finish	Matt Black
Power Supply	12Vdc
Cable Length	1.5m
Colour Temperature	Warm White (3000K - 3500K) or Natural White (4000K - 4500K)
Wattage	5W
IP Rating	IP20
Colour Rendering Index	Ra>80
Total Lumens	240lm
Beam Angle	120°
Dimensions	200 (w) x 100 (d) x 6.5 (h)

The Vega has been designed to offer a superior light output and has a diffused cover to mimic the appearance of halogen cabinet lights with no visible LED points. The fitting also has unique magnetic fixing and enhanced curved matt black edges.

TECHNICAL INFO

Finish	Matt Black
Power Supply	12Vdc
Cable Length	1.5m
Colour Temperature	Warm White (3000K - 3500K) or Natural White (4000K - 4500K)
Wattage	3.5W
IP Rating	IP20
Colour Rendering Index	WW - Ra 80, NW - Ra 86
Total Lumens	WW - 125lm, NW - 143lm
Beam Angle	120°
Dimensions	99 (w) x 99 (d) x 6.5 (h)

CABINET LIGHTING

VEGA MODA



PART CODE & DESCRIPTION

Vega Moda Matt Black/Natural White

SY9805/BL

COMPATIBLE POWER CONVERTERS

8W 12Vdc LED Power Converter (1-3 lights)

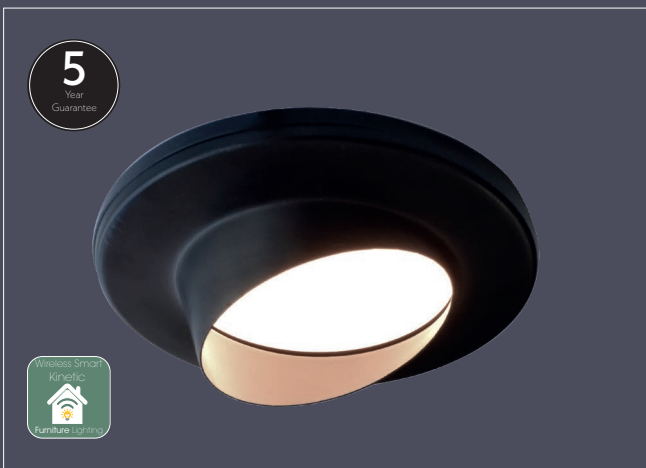
SY9980B

15W 12Vdc LED Power Converter (1- 6 lights)

SY9739B



SIRIUS SUPER SLIM ANGLED



PART CODE & DESCRIPTION

Sirius Super Slim Angled
Matt Black/Warm White

SY8935B/2700K

COMPATIBLE POWER CONVERTERS

8W 12Vdc LED Power Converter (1-3 lights)

SY9980B

15W 12Vdc LED Power Converter (1-6 lights)

SY9739B



The Vega Moda is a discreet slim-line cabinet light with a diffused illuminated panel for a super smooth appearance. Available with a matt black magnetic bezel, and an attractive edge lit feature, the Vega Moda would fit perfectly into a contemporary setting.

TECHNICAL INFO

Finish	Matt Black
Power Supply	12Vdc
Cable Length	2m
Guarantee	5 Years
Colour Temperature	Natural White (4000K - 4500K)
Wattage	2.2W
IP Rating	IP20
Colour Rendering Index	Ra >86
Total Lumens	150lm
Beam Angle	120°
Dimensions	190 (w) x 80 (d) x 6 (h)

This diffused angled cabinet light is surface mounted and has a super slim design with a magnetic cover to conceal the installation fixings. Available only in warm white 2700K.

TECHNICAL INFO

Finish	Matt Black
Power Supply	12Vdc
Cable Length	1.5m
Colour Temperature	Warm White (2700K)
Wattage	2W
IP Rating	IP20
Colour Rendering Index	Ra 81
Total Lumens	52lm
Beam Angle	120°
Dimensions	74 (dia) x 22 (h)

CABINET LIGHTING

SIRIUS SUPER SLIM



PART CODE & DESCRIPTION

Sirius Super Slim Matt Black/Warm White	SY8935A/BLWW
Sirius Super Slim Matt Black/Natural White	SY8935A/BL

COMPATIBLE POWER CONVERTERS

8W 12Vdc LED Power Converter (1-3 lights)	SY9980B
15W 12Vdc LED Power Converter (1-6 lights)	SY9739B



This diffused cabinet light is surface mounted and has a super slim design with a magnetic cover to conceal the installation fixings. This sleek matt black fitting is available in a choice of natural white or warm white.

TECHNICAL INFO

Finish	Matt Black
Power Supply	12Vdc
Cable Length	1.5m
Colour Temperature	Warm White (3000K - 3500K) or Natural White (4000K - 4500K)
Wattage	2W
IP Rating	IP20
Colour Rendering Index	WW - Ra 80, NW - Ra 86
Total Lumens	WW - 125lm, NW - 143lm
Beam Angle	120°
Dimensions	74 (dia) x 7(h)

VEGA SUR/REC LIGHT



PART CODE & DESCRIPTION

Vega Recessed Matt Black Natural White	SY7945BL/NW
Vega Sur/Rec Matt Black Natural White	SY7946BL/NW

COMPATIBLE POWER CONVERTERS

8W 12Vdc LED Power Converter (1-3 lights)	SY9980B
15W 12Vdc LED Power Converter (1-5 lights)	SY9739B
20W 12Vdc LED Power Converter (1-6 lights)	SY7350C



The Vega LED Cabinet light features a diffused cover, so there are no visible LED points in the fitting, and also has a 120 degree beam angle which fills cabinets or work surfaces, eliminating dark spots. Now available in matt black finish.

TECHNICAL INFO

Finish	Matt Black
Power Supply	12Vdc
Cable Length	1.5m
Colour Temperature	Natural White (4000 - 4500K)
Wattage	2.3W
IP Rating	IP20
Colour Rendering Index	Ra 87
Total Lumens	158lm
Beam Angle	120°
Dimensions	Rec. 64 (dia) x 12 (d) 57 (cut out) Sur. 64 (dia) x 16 (h)

CABINET/PLINTH LIGHTING

VEGA DESIGNER TRI-LIGHT



PART CODE & DESCRIPTION

Vega Designer Tri-Light
Matt Black Natural White

SY7947BL/NW

COMPATIBLE POWER CONVERTERS

8W 12Vdc LED Power Converter (1-3 lights)	SY9980B
15W 12Vdc LED Power Converter (1-5 lights)	SY9739B
20W 12Vdc LED Power Converter (1-6 lights)	SY7350C



15MM PLINTH LIGHT



PART CODE & DESCRIPTION

4 Light Kit (Stainless Steel) Warm/Cool	SY9936WW or CW
10 Light Kit (Stainless Steel) Warm/Cool	SY9928A/WW or CW
Individual (Stainless Steel) Warm/Cool	SY9937WW or CW

For black finish please purchase kit required from above, and purchase the covers separate, listed below.

Black Cover (individual)	SY9939BK
--------------------------	----------



The Vega LED Designer Tri-Light features a diffused cover, so there are no visible LED points in the fitting, and also has a 120 degree beam angle which fills cabinets or work surfaces, eliminating dark spots. Now available in matt black finish.

TECHNICAL INFO

Finish	Matt Black
Power Supply	12Vdc
Cable Length	1.5m
Colour Temperature	Natural White (4000 - 4500K)
Wattage	2.3W
IP Rating	IP20
Colour Rendering Index	Ra 87
Total Lumens	158lm
Beam Angle	120°
Dimensions	170 (w) x 140 (d) x 26 (h)

This small and discreet recessed plinth light is now available with a matt black finish, and with either cool or warm white LED.

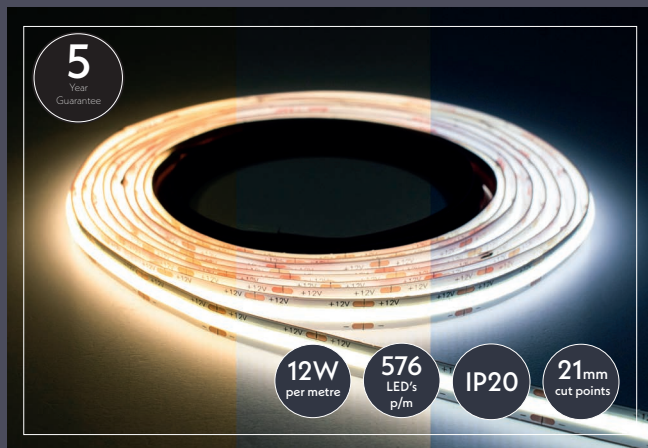
The 15mm plinth lights are available in a 4 or 10 light kit, which includes the power converter, Add on lights are also available, up to a maximum of 10 lights can be run per power converter.

TECHNICAL INFO

Finish	Stainless Steel/Matt Black
Power Supply	12Vdc (included)
Cable Length	2m
Colour Temperature	Warm White (3000K - 3500K) or Cool White (6000K - 6500K)
Wattage	0.2W per fitting
IP Rating	IP67
Dimensions	15 (dia) x 39.5 (d) 10 (cut out)

COB LED STRIP

TUNABLE COB LED STRIP 5M REEL



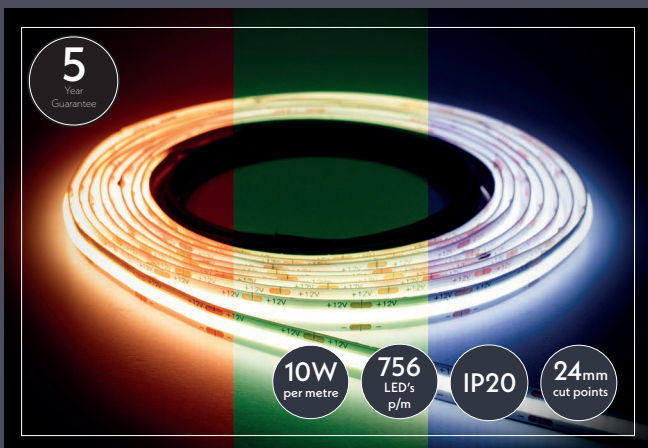
PART CODE & DESCRIPTION

Tunable COB 5m Reel	SY2450
Accessories	
Remote Control & Receiver Kit (Wi-Fi Series)	SY5699B
Receiver (Wi-Fi Series)	SY7699B
Wall Mounted Control	SY8810/TUN
2m Reconnection Distribution Cable	SY2454
30mm Corner Connector (Flexi)	SY2456
Direct Connector	SY2452

COMPATIBLE POWER CONVERTERS

50W 12Vdc LED Power Converter (max 4m)	SY7351D
100W 12Vdc LED Power Converter (max 8m)	SY7440A

RGB COB LED STRIP 5M REEL



PART CODE & DESCRIPTION

RGB COB 5m Reel	SY2451
Accessories	
Remote Control & Receiver Kit (Wi-Fi Series)	SY7598B/WH*
Additional Receiver (Wi-Fi Series)	SY7538B
Wall Mounted Control	SY8810/RGB
2m Reconnection Distribution Cable	SY2453
30mm Corner Connector (Flexi)	SY2455
Direct Connector	SY2452
100mm Bridge Cable	SY7341A
1m Bridge Cable	SY7343A
2m Bridge Cable	SY7345A
Y-Splitter	SY7347A



Tunable white enables the user to choose their desired colour temperature, from warm white (2700k) to natural white (4000k) to cool white (6000k) by simply using a hand held remote control, the wall mounted controller, or from a smart-phone or tablet using a free downloadable App. This product also utilises smooth dimming technology, so the unit can be set to totally suit customer requirements. Power converter, remote control & receiver required, purchased separate. Receiver features built in Wi-Fi capabilities.

The high output COB LED strip features LED points within close proximity to each other, creating a uniform light output with no spotting, perfect for illuminating handle-less kitchen designs. The strip has a depth of only 1.7mm so is ideal for situating underneath a worktop, and is suitable for installation on all coloured handle-less profiles without the need for an aluminium extrusion

This COB LED strip is supplied with very high bond (VHB) 3M tape.

TECHNICAL INFO

Power Supply	12Vdc
Adhesive	3M VHB
Cable Length	2m at both ends
Colour Temperature	Tunable White (3000K/4000K/6000K)
Colour Rendering Index	> Ra 90
Wattage	12W/m
IP Rating	IP20
Cut Marks	Every 21mm
LEDs per metre	576



RGB colour changing strip enables the user to choose from a wide variety of colours by simply using a hand held remote control, the wall mounted controller, or from a smart-phone or tablet using a free downloadable App. This product also utilises smooth dimming technology, so the unit can be set to totally suit customer requirements. Power converter, remote control & receiver required, purchased separate. Receiver features built in Wi-Fi capabilities.

The product also utilises smooth dimming technology, so the unit can be totally set to suit customer requirements. The LED strip is supplied with very high bond (VHB) tape. Please note that the strip must be installed onto a clean, dry surface. Various extrusions are available for our LED strip, see page 11.

TECHNICAL INFO

Power Supply	12Vdc
Adhesive	3M VHB
Cable Length	2m at both ends
Colour Temperature	RGB Colour Changing
Wattage	10W/m
IP Rating	IP20
Cut Marks	Every 24mm
LEDs per metre	756

COMPATIBLE POWER CONVERTERS

50W 12Vdc LED Power Converter (max 5m)	SY7351D
100W 12Vdc LED Power Converter (max 10m)	SY7440A

*Remote control also available in black please use code SY7598B/BL

COB & ARC LED STRIP

SUPERIOR COB LED STRIP 5M REEL



PART CODE & DESCRIPTION

Superior COB 5m Reel
Warm or Natural White

SY9001WW or NW

COMPATIBLE POWER CONVERTERS

15W 12Vdc LED Power Converter (max 3m)

SY9739B

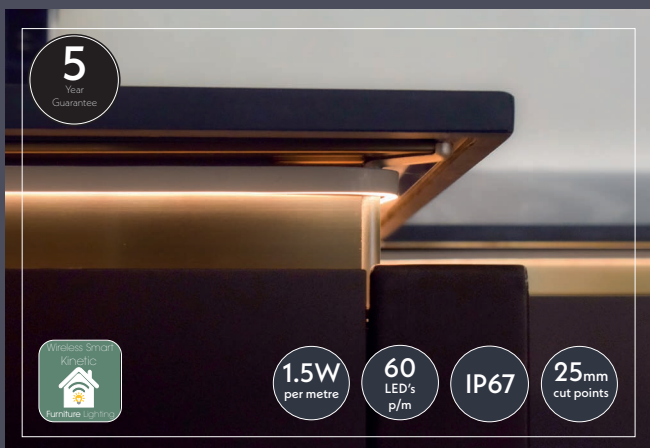
20W 12Vdc LED Power Converter (max 5m)

SY7350C

30W 12Vdc LED Power Converter (max 7m)

SY7715A

ARC LED STRIP 5M REEL



PART CODE & DESCRIPTION

ARC 5m Reel Warm or Natural

SY9026WW or NW

COMPATIBLE POWER CONVERTERS

8W 12Vdc LED Power Converter (max 5m)

SY9980B

15W 12Vdc LED Power Converter (max 10m)

SY9739B



This new high output COB LED strip features LED points within close proximity to each other, creating a uniform light output with no spotting, perfect for illuminating handle-less kitchen designs. The strip has a depth of only 1.7mm so is ideal for situating underneath a worktop, and is suitable for installation on all coloured handle-less profiles without the need for an aluminium extrusion. This LED strip also comes with VHB (Very High Bond) tape

TECHNICAL INFO

Power Supply	12Vdc
Adhesive	3M VHB
Cable Length	2m at both ends
Colour Temperature	Warm White (3000K - 3500K) or Natural White (4000K - 4500K)
Colour Rendering Index	> Ra 90
Wattage	4W/m
IP Rating	IP20
Cut Marks	Every 25mm
LEDs per metre	512

The new super-slim ARC LED strip has been specifically designed for true handle-less and worktop lighting. However, it can also be used on plinths, within cabinets, and recessed into cabinetry to give a discreet look. At 4 x 7mm, it offers a discreet, dot-less uniform light line. It can be recessed into a worktop, or fitted to aluminium profile within a handle-less kitchen using the 3M VHB adhesive tape which is applied to each 5 metre length of strip.

There are 2 metre cables with connectors on each end, and it can be cut at 25mm intervals, therefore cutting down on waste. The super-slim ARC can negotiate 90 degree internal and external corners without creating any dark spots, and at 1.5W per metre, it is very energy efficient.

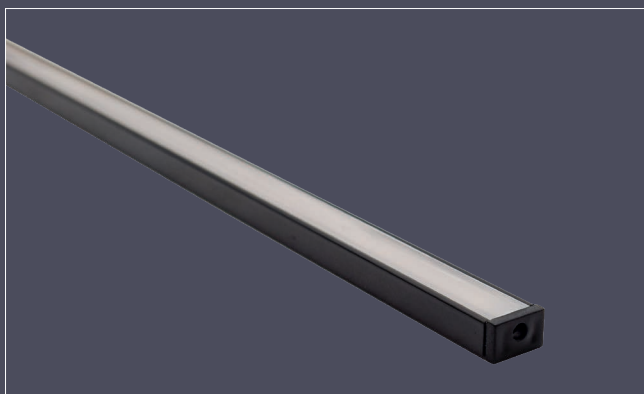
TECHNICAL INFO

Power Supply	12Vdc
Adhesive	3M VHB
Cable Length	2m at both ends
Colour Temperature	Warm White (3000K - 3500K) or Natural White (4000K - 4500K)
Wattage	1.5W/m
IP Rating	IP67
Cut Marks	Every 25mm
LEDs per metre	60



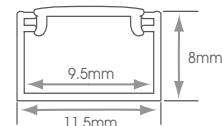
MATT BLACK EXTRUSIONS

SLIM SURFACE MOUNTED & DIFFUSER



Mounting LED strip within an extrusion not only helps to keep runs straight and neat, it also assists with heat dissipation, therefore prolonging the life of the LED strip.

A diffuser finishes off the clean look, and provides protection from dust and water splashes. We have various styles available depending on the application. New matt black versions available, however we also supply aluminium finish, please visit our website for more details.

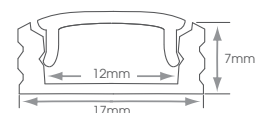
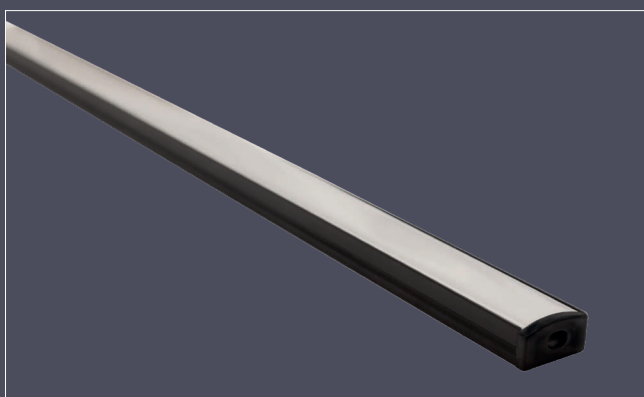


PART CODE & DESCRIPTION

2m Surface Mounted Extrusion Slim Matt Black with
Opal Diffuser & Adhesive Back

SY7689BL

SURFACE MOUNTED & DIFFUSER

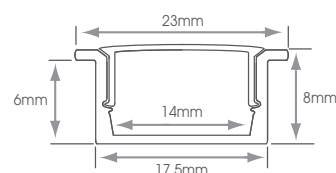
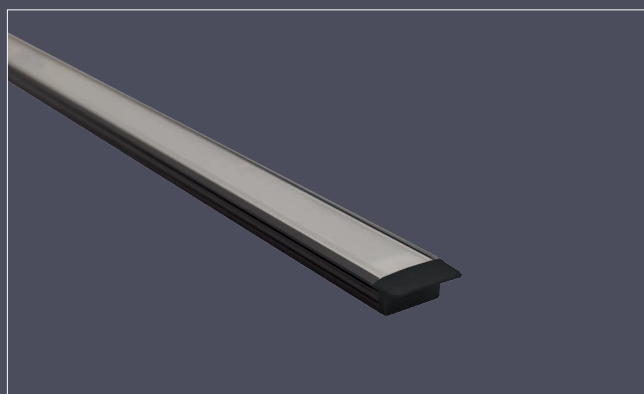


PART CODE & DESCRIPTION

2m Surface Mounted Extrusion Matt Black
with Opal Diffuser & Mounting Clips

SY7482MB

RECESSED & DIFFUSER

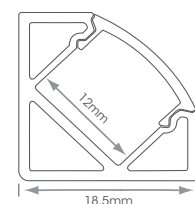


PART CODE & DESCRIPTION

2m Surface Recessed Matt Black
with Opal Diffuser

SY7392MB

ANGLED & BLACK DIFFUSER



PART CODE & DESCRIPTION

2m Surface Angled Extrusion Matt Black
with Black Diffuser & Mounting Clips

SY7409BL/B

POWER PORTS

MOTORISED POP UP SOCKET WITH SPEAKER



TECHNICAL INFO

Finish	Black with Black Glass Top
Wireless Charging	Qi
UK Sockets	2
USB Ports	1 x USB-A (2.1A) & 1 x USB-C (3.0A)
Cable Length	1.9m
Guarantee	12 Months
Cut Out Size	95mm



PART CODE & DESCRIPTION

Motorised Pop Up Socket with Speaker/USB/ Qi Charging with Black Glass Top	SY9019BK/SPEAKER
--	------------------

MOTORISED POP UP SOCKET



TECHNICAL INFO

Finish	Black/Black Glass Top
Wireless Charging	Qi
UK Sockets	3
USB Ports	1 x USB-A (2.1A) & 1 x USB-C (3.0A)
Cable Length	1.9m
Guarantee	12 Months
Cut Out Size	95mm



PART CODE & DESCRIPTION

Motorised Pop Up Socket with USB/ Qi Charging with Black Glass Top	SY9019BK
--	----------

POWERTECH POP UP SOCKET



TECHNICAL INFO

Finish	Black Top
UK Sockets	3
USB Ports	2 x USB-A (2.0A Combined)
Guarantee	12 Months
Cut Out Size	102mm

PART CODE & DESCRIPTION

Powertech Pop Up Socket with Black Top	SY7192BK
--	----------

EVOLINE BACK FLIP

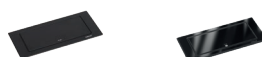


TECHNICAL INFO

Finish	Black/Black Glass
UK Sockets	2
USB Ports	1 x USB-C (USB-A still available to order)
Guarantee	12 Months
Cut Out Size	88 x 215

PART CODE & DESCRIPTION

Evoline Back Flip Black Steel	SY9736BS/C
Evoline Back Flip Black Glass	SY9736BK/C



CEILING LIGHTING

RIGA TRIO SWITCHABLE DIMMABLE FIRE RATED LED CEILING LIGHT



PART CODE & DESCRIPTION

Riga Trio Switchable Downlight White	SY9004WH
For black bezel please purchase light above, and purchase the additional bezels separate, listed below.	
Matt Black Bezel	SY9005BL

Choose from 3000k, 4000k or 6000k by simply choosing your preference using the integrated switch on the fitting. It is also fully dimmable from most standard wall dimmers, and also includes the power converter. The light output is equivalent to a 50W GU10 halogen lamp, but due to the latest LED technology it uses 85% less energy, helping to save money and the environment.

The fitting is designed to allow loft insulation to be continuously run over the back of the fitting (IC Rated), and features a loop in - loop out clip block

TECHNICAL INFO

Power Supply	240V
Colour Appearance	Switchable - Warm, Natural or Cool
Colour Temperature	Switchable - 3000K, 4000K or 6000K
Guarantee	5 Years
Wattage	8W
Beam Angle	60°
Total Lumens	WW - 782lm NW - 916lm, CW - 805lm
IP Rating	IP65
Colour Rendering Index	>Ra 80
Finish	White (Matt Black available to purchase separate)
Cut Out Size	70mm

RIGA PLUS SWITCHABLE DIMMABLE FIRE RATED LED CEILING LIGHT



PART CODE & DESCRIPTION

Riga Plus Switchable Downlight White	SY9050WH
For black bezel please purchase light above, and purchase the additional bezels separate, listed below.	
Matt Black Bezel	SY9051BK







Choose from 3000k, 4000k or 6000k by simply choosing your preference using the integrated switch on the front of the fitting. It is also fully dimmable from most standard wall dimmers, and also includes the power converter. The light output is equivalent to a 50W GU10 halogen lamp, but due to the latest LED technology it uses 85% less energy, helping to save money and the environment.

This ultra slim fitting is designed to allow loft insulation to be continuously run over the back of the fitting (IC Rated), and features a speed fit tool free loop in - loop out terminal. The colour appearance can be changed at any time without removing the fitting from the ceiling by simply removing the bezel.

TECHNICAL INFO

Power Supply	240V
Colour Appearance	Switchable - Warm, Natural or Cool
Colour Temperature	Switchable - 3000K, 4000K or 6000K
Guarantee	5 Years
Wattage	6W
Beam Angle	40°
Total Lumens	WW - 593lm NW - 680lm, CW - 635lm
IP Rating	IP65
Colour Rendering Index	>Ra 80
Finish	White (Matt Black available to purchase separate)
Cut Out Size	65mm

GLOSSARY OF ICONS AND TECHNICAL DATA

	Indicates the compliance with the low voltage and electromagnetic compatibly
	Indicates the compliance with the applicable requirements from products sold within the UK.
	Class I lighting: includes earth protection as a complementary security measure against electrical shocks
	Class II lighting: includes a reinforced or double insulation as a protection against electrical shocks
	Class III lighting: the protection against electrical shocks comes from the supply of very low voltage tension
	Suitable for installation on normally combustible surfaces
	Suitable for use in furniture
	For indoor use only
	WEEE Compliant
	ROHS compliant

Guarantee

Please refer to our website for information on our guarantee terms and conditions.

Colour Appearance and Colour Temperature

The most common terminology is to classify colour temperature as one of three options. These being warm white (approx 3000k), natural white (approx 4000k) and cool white (approx 6000k).

Colour Rendering Index (CRI)

This is a figure that indicates the accuracy of the reflective surface colour of an object when subjected to artificial light. For example an object in daylight on a reasonably sunny day will be subject to a CRI of 100 from the light source, which in this case would be daylight, the sun. Theoretically the colour of an object will be 100% true.

Once the same object is placed into a dark room and a light fitting with a CRI of 85 is illuminating it, then the colour of that object will be 85% of its true colour. Therefore the higher the CRI, the more accurate the colour.

Colour temperature has a bearing on this as a white object would appear "yellow" if illuminated by a warm white light source. Careful consideration has to be taken to ensure that the correct type of light with the correct CRI and colour temperature is selected for any given installation.

A CRI of 80 is the minimum standard.

Total Lumens

This relates to the amount of light (lumens) emitted from a light fitting in relation to the amount of power it uses to create this output. There are now regulations in place that state minimum lumens per watt criteria and any lights that do not conform aren't able to be used in certain applications. Advice should always be taken to ensure that the correct lighting is used on any installation.

Beam Angles

The beam angle of a light fitting allows the installer to determine the spacing of light fittings as to achieve the most uniform, consistent lighting onto the desired area.

1. DEFINITIONS: A) The "seller" means SPL Components Ltd. B) The "buyer" means the person who buys or agrees to buy the goods from the seller. C) The "goods" means all items which the buyer agrees to buy from the seller.

2. GENERAL: Orders are only accepted subject to the Conditions of Sale set out below and the seller shall not be bound by any other terms, written, verbal or implied, or which are conditions customary in the trade and whether contained in customer's order or not. These conditions shall apply unless expressly varied by the seller in writing.

3. TERMS: Credit accounts are nett strictly within 30 days. Interest at a rate of 3% per annum above HSBC Back Plc base rate, together with any expenses incurred in collecting payments, will be added to the agreed price in respect of any part thereof not paid, on or before the due date. Where a new account is to be opened two trade references are required. The seller has the right to discontinue delivery without notice if the buyer defaults in payment, or if circumstances warrant such discontinuance. The seller also has the right to refuse credit terms to a buyer for any reason. Proforma orders will only be delivered when the seller has received payment in full, including confirmed clearance of any cheque.

4. PRICES: Whilst every endeavour will be made to deliver at the prices quoted, the seller reserves the right to invoice at the price ruling at the date of delivery. All prices are subject to VAT at the rate prevailing at the date of invoice.

5. RISK AND DELIVERY: A) Goods are delivered to the buyer when the seller makes them available to the buyer (or any agent of the buyer) at the seller's premises or other delivery point agreed by the seller and risk in the goods passes when they are delivered to the buyer. B) The seller shall not be liable for any penalty, loss, injury, damage or failure in delivery from any cause at all nor shall any such delay or failure entitle for any buyer to refuse to accept any delivery or to repudiate the contract. C) Any dates quoted by the seller for delivery of the goods are approximate only and shall not form part of the contract and the buyer acknowledges that in the performance expected of the seller no regard has been paid to any quoted delivery dates.

6. CARRIAGE AND ADMINISTRATION CHARGES: A small order management charge of £10 will be applicable on all orders under £100. Carriage charges will be subject to size/weight of the consignment. All offshore islands and EC countries will incur a separate delivery charge, based on the weight of the total order. Please note that administration and delivery charges are subject to change without prior notice.

7. CLAIMS: Claims must be notified in writing within seven days of receipt, otherwise responsibility cannot be accepted. The seller's liability shall be limited to, at the seller's option, replacing the goods or refunding the price of the goods. Under no circumstances shall the liability of the seller exceed the price of the goods. Replacements for damaged goods will be charged and credit issued on the return of the damaged goods to the seller in the original packaging.

8. RETENTION OF TITLE: A) In spite of delivery having been made, property in the goods shall not pass from the seller until payment in full of the price by the buyer. B) Notwithstanding delivery, property in the goods shall not pass from the seller until all other sums owed by the buyer to the seller have been paid in full. C) Until payment in full for the goods, the buyer shall hold the goods on a fiduciary basis as a bailee for the seller. D) Whilst the buyer has the right to dispose of the goods in the ordinary course of business on a bona-fide sale without notice to the customer of the seller's rights hereunder, the entire proceeds of sale or otherwise of the goods shall be held in trust for the seller until payment in full for the goods. E) Until payment in full for the goods the buyer hereby grants the seller the right to enter any premises where the goods are stored in order to re-possess or inspect them.

9. BREACH AND INSOLVENCY: If the buyer breaches any condition of this contract or becomes subject to an Administration Order or becomes bankrupt or has a receiver appointed for or distress is levied on any part of its assets or business or goes into liquidation or makes any composition with its creditors, the seller shall be entitled (whether in respect of this contract or any other) to: A) Withhold any further deliveries to the buyer and/or cancel the contract without liability. B) Appropriate any payment made by the buyer to such of the goods (whether supplied under this contract or any other) as the seller shall think fit. C) Immediate payment of all sums whatever, owing by the buyer to the seller notwithstanding any previous agreement to the contrary. D) Exercise any of its right pursuant to clause 8 above.

10. PRODUCT INFORMATION: Although the seller shall use its best endeavours to ensure that the information contained in the seller's catalogue is correct at the time of going to press, the seller shall not be under any liability for any damage, loss or expense resulting from any error or omission contained in the seller's catalogue. Goods supplied may vary in detail from the illustrations, drawings and descriptions (which are approximate and for guidance only) in the seller's catalogue as a result of improvements or modifications. Colour finishes will be maintained as accurately as possible, but matching cannot be guaranteed.

11. FORCE MAJEURE: The seller shall not be liable for any default due to any act of God, war, strikes, lock-outs or other industrial action, difficulties in obtaining labour or parts, government or other restrictions or regulations or other event beyond the reasonable control of the seller.

12. LAW AND JURISDICTION: All disputes arising out of or in connection with the contract shall be governed by English law and the buyer accepts the jurisdiction of the Courts Of England.

13. RETURN AND RESTOCKING: When goods are agreed for a return or cancellation the buyer shall pay a handling or restocking charge to cover administration and inspection charges involved in reprocessing products back into stock. The charge will be subject to change without prior notice but is currently 25% of the invoiced value of the goods. Non standard and special items ordered by the buyer cannot be accepted for return.

14. GUARANTEES. Terms and conditions apply to the guarantees and lamp life of our products. Please refer to our website for further details.

15. CUT OUT SIZES AND DIMENSIONS. These are correct at time of printing. We do not recommend any holes are cut until goods are received and checked.



complete furniture components

SPL Components Limited
Units 4, 5 & 6 Lockwood Park Industrial Estate,
Leeds, West Yorkshire, LS11 5UX

Tel: +44 (0)113 271 3200

Fax: +44 (0)113 276 1195

sales@splcomponentsltd.co.uk

www.splcomponentsltd.co.uk